

# GARDEN MYSTERY



VIRTUAL  
**Field Trip**  
to the California Science Center

## FOCUS QUESTION:

WHY IS IT  
IMPORTANT  
FOR HABITATS  
TO HAVE MANY  
DIFFERENT  
TYPES OF  
LIVING THINGS?

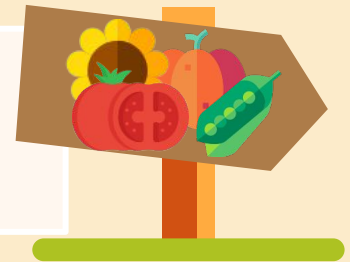
## BUZZWORD: DIVERSITY

### THE SITUATION:

Last year, the 2nd grade class planted a garden. When the students returned from summer break, they noticed something strange. Fruits and vegetables from their garden were growing in places where the students did not plant them.



How did this  
happen?



### HYPOTHESIS:

I think plants from the garden grew where the students did not plant them because...

Write your answer in this text box, or on a separate sheet of paper (such as in a notebook).



# MATERIALS:

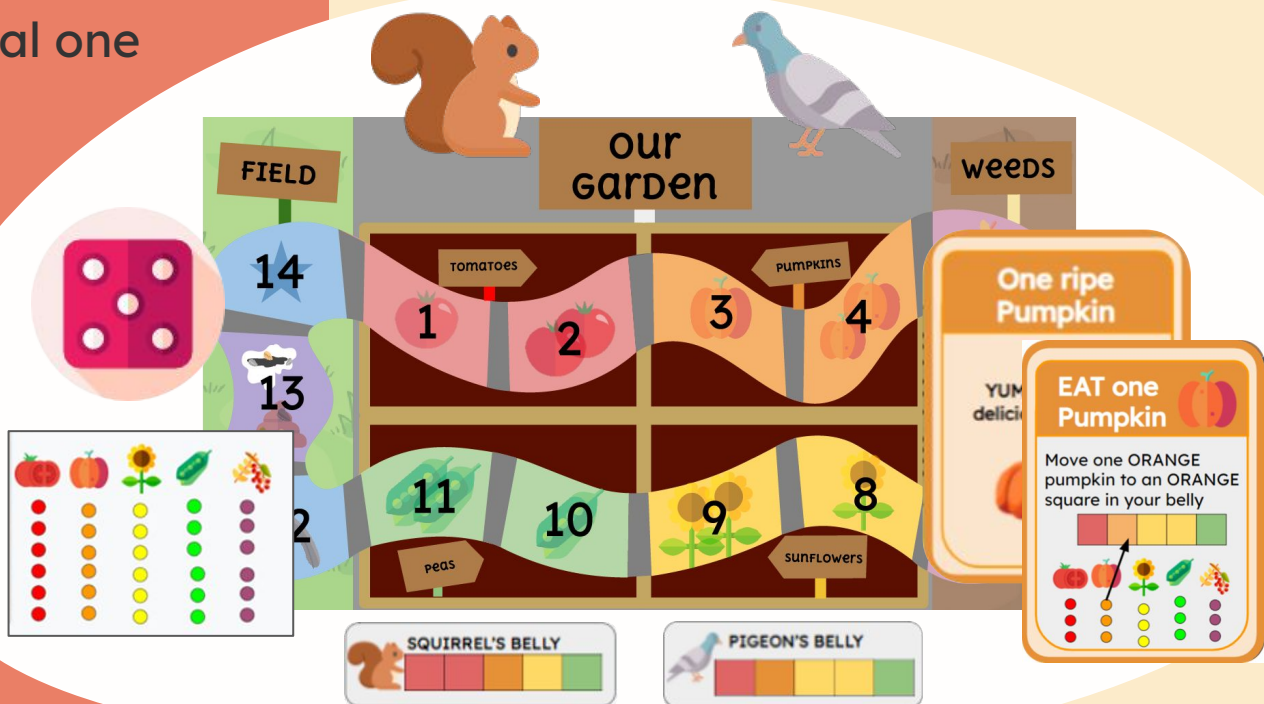
- Board Game provided by your teacher
  - Instructions
  - 2 Game pieces
  - 2 Bellies
  - Food tokens
  - 14 Action Cards
- Die\* you can use a virtual game die or a real one

# EXPERIMENT!



**Play the board game:** A pigeon and a squirrel live in the school yard. Help them find food while you discover what happened to the garden this summer!

1. Follow the instructions on the board and cards to play the game.
2. Play 10 turns as each animal, taking turns to roll for each.
3. Notice where the foods from the garden and the weeds are now.



# WHAT'S GOING ON?



1. Using the game board as evidence, explain how you think the fruits and flowers from the garden were able to grow where the students did not plant them. *HINT: What was inside of the fruits, flowers, and animal poop?*
2. How would the school yard be different if the squirrel and the pigeon did not live there?
3. Based on your observations, how do the plants and animals in the school yard habitat help each other grow and survive?



Write your answer in this text box, or on a separate sheet of paper (such as in a notebook).